

MB Series

Elastomer Shock and Vibration Mounts

Features/Benefits

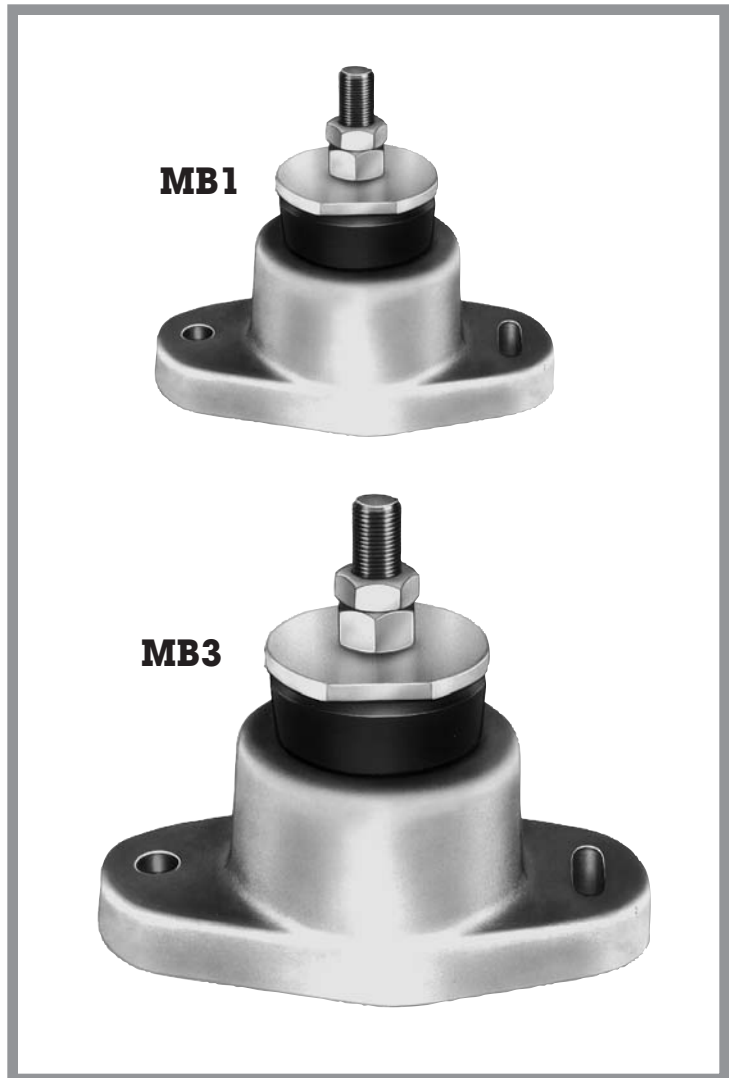
- Static Load Ranges from 30 to 1300 lbs.
- Axial and Radial Loading
- Structureborne noise attenuation
- Fail-Safe Design
- Natural Frequency 12 to 15Hz at max. rated load
- Built-in leveling device
- Furnished as complete assembly for ease of installation

Construction/Material Data

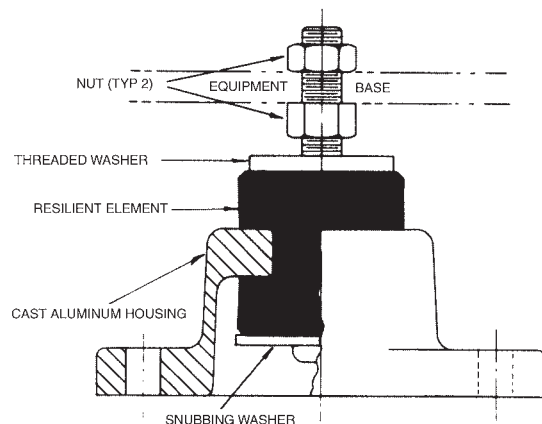
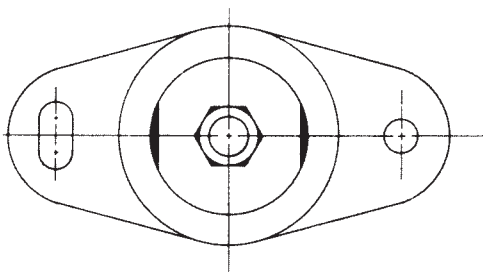
- Housing - cast aluminum, heat treated
- Hardware - carbon steel, zinc plated
- Elastomer - Neoprene
 - Resists oils, ozone and most solvents
 - Operating Temperature (-20°F to +180°F)
 - Damping Ratio $C/C_c = 0.1$ (transmissibility approx. 5:1 at resonance)

Applications

- Marine, Vehicular and Stationary Equipment
 - Engine Generators and Compressors
 - Pumps and Centrifuges
 - Electric Motors and Transformers
 - Roof-top equipment subjected to weathering and severe winds
 - Engine/Drive Trains

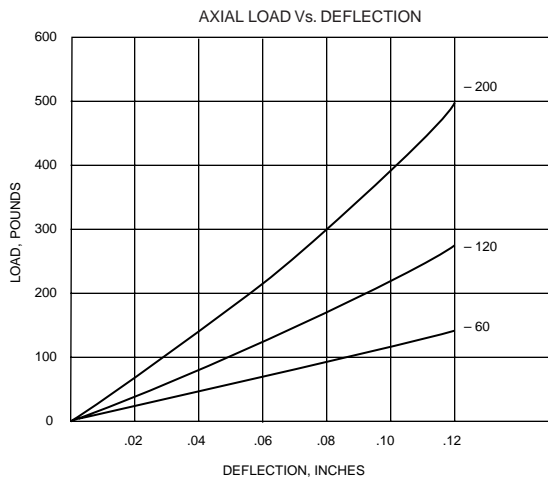
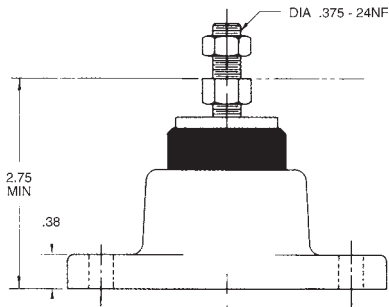
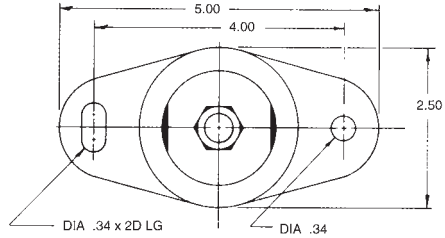


Installation Configuration



MB1 Series

Part Number	Axial Static Load, Max. (pounds)	Radial Static Load, Max. (pounds)
MB1-60	60	30
MB1-120	120	40
MB1-200	200	50

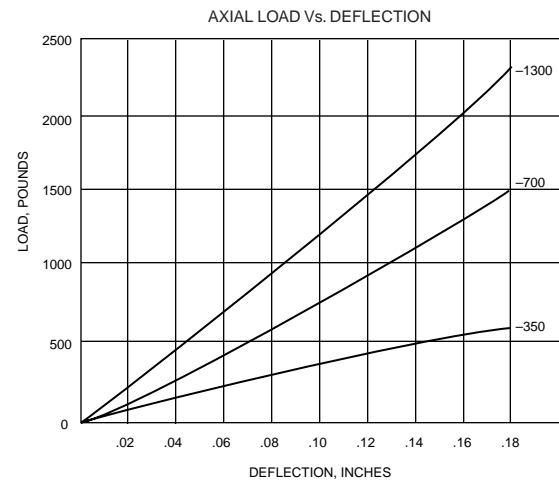
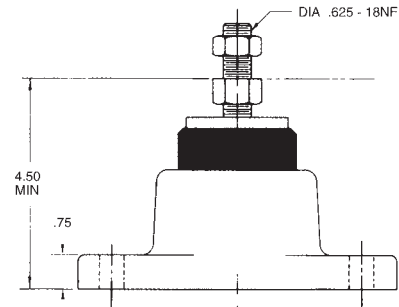
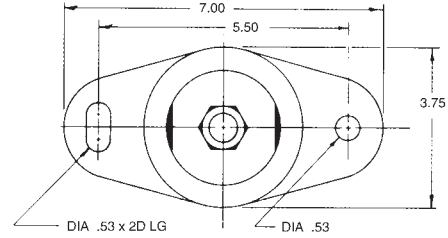


Load Vs. Natural Frequency

Part Number	Axial Static Load, Max. (pounds)	Approximate Natural Freq. (Hz) (at Max. Load)
MB1-60	60	15
MB1-120	120	15
MB1-200	200	15

MB3 Series

Part Number	Axial Static Load, Max. (pounds)	Radial Static Load, Max. (pounds)
MB3-350	350	140
MB3-700	700	300
MB3-1300	1300	650



Load Vs. Natural Frequency

Part Number	Axial Static Load, Max. (pounds)	Approximate Natural Freq. (Hz) (at Max. Load)
MB3-350	350	12
MB3-700	700	12
MB3-1300	1300	12